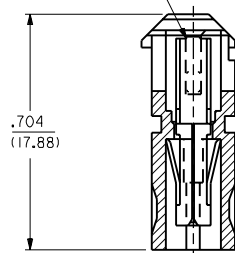
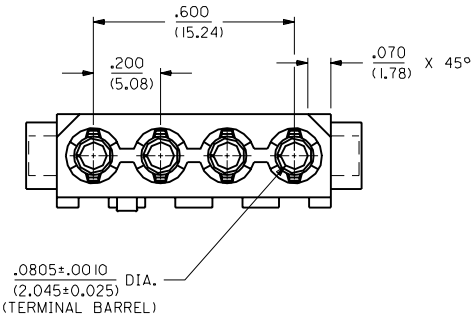


SEE NOTE #4

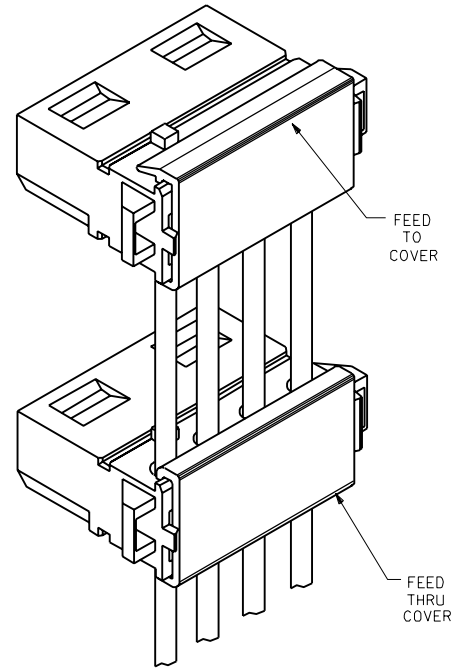


SECTION A-A



NOTES:

- ALL WIRES TO HAVE A MAX. DIAMETER OVER INSULATION OF .095/(2.41).
- COVERS ARE SUGGESTED TO RETAIN WIRES. FEED TO DRAWING NO. SD-70156-4000, FEED THRU DRAWING NO. SD-70156-3000. SEE SHEET 2 FOR AVAILABLE KITS.
- MATERIAL: HOUSING-NYLON, TYPE 6/6, 94V-2, COLOR: NATURAL
HOUSING-POLYESTER, 94V-0
COLOR: WHITE
TERMINAL-PHOSPHOR BRONZE
- .008/(0.20) MAX. VERTICAL PROJECTION DUE TO CARRIER CUT-OFF.
- PS-70156-**** APPLIES.
- SDES-70156 APPLIES.
- PK-70873-0250 APPLIES.



| | |
|----|---|
| E | TRANSFER TO INDIA ECN UDT1999-0929 SCHAFER 99/04/30 |
| D2 | ADDED PART NO. PER ECN U6-0935 02/08/96 DRS |
| D1 | ADDED PART NO. PER ECN U5-0148 09/01/94 DRS |
| D | MODIFIED PER ECN U2-1589 10-28-92 DRS |
| C1 | ADDED NOTE #7 PER ECN U2-1007 07-06-92 DRS |
| C | MOD. WIRE SELECTION PER ECN U2-0873 06-08-92 DRS |
| B | MOD. WIRE SELECTION PER ECN U2-0718 05-07-92 DRS |
| A | X-RELEASE PER ECN U2-0581 04-15-92 DRS |

MFG. SH. REV. LTR. REVISIONS

| | | | | | |
|--|---------|---|---------|--|--|
| DIMENSIONS SHOWN (METRIC) INCH | | UNLESS OTHERWISE SPECIFIED TOLERANCES: ANGULAR ± 1/2° | | TITLE | |
| INCH | | METRIC | | SALES ASSEMBLY | |
| 3 PLACE | ± .0005 | ± .0005 | ± .0005 | 4 CKT. POWER CONNECTOR | |
| 2 PLACE | ± .0010 | ± .0010 | ± .0010 | MOLEX INCORPORATED | |
| 1 PLACE | ± .0015 | ± .0015 | ± .0015 | SHEET NO. DATE | |
| DRAFT WHERE APPLICABLE MUST REMAIN WITHIN DIMENSIONS | | | | 1 OF 2 06/30/89 | |
| DRAWN BY: SCHMIDGALL | | CHKD. BY: BIXLER | | PART NO. DATE | |
| APP'D BY: BIXLER | | SCALE 4 : 1 | | SEE CHART SDA-70156-**** | |
| FILE NAME: 57015601 | | SCALE 4 : 1 | | SIZE | |
| DRG. NO. 57015601 | | SCALE 4 : 1 | | THIS DRAWING CONTAINS INFORMATION THAT IS PROPRIETARY TO MOLEX INC. AND SHOULD NOT BE USED WITHOUT WRITTEN PERMISSION. | |

| | | | | | | 70156 | | | | | |
|---|-------------|---------------|--------------|--------------|--|--------------|----------------|------------|--------------|----------------|---|
| | | | | | | BLACK COVER | | | WHITE COVER | | |
| J | PART NUMBER | ENG. NUMBER | PLATING CODE | COLOR STRIPE | RECOMMENDED WIRE TYPE | KIT PART NO. | KIT ENG. NO. | COVER TYPE | KIT PART NO. | KIT ENG. NO. | J |
| I | 15-24-3000 | A-70156-2003 | 101 | YELLOW | 16 AWG STRANDED, UL STYLE #1007 ONLY | 15-24-3001 | MS-70156-2303 | FEED THRU | 15-24-2035 | MS-70156-2503 | I |
| | | | | | | 15-24-3002 | MS-70156-2403 | FEED TO | 15-24-2036 | MS-70156-2603 | |
| | 15-24-2000 | A-70156-2000 | 101 | RED | 18 AWG STRANDED 20 AWG SOLID & FUSED STRANDED | 15-24-2003 | MS-70156-2300 | FEED THRU | 15-24-2037 | MS-70156-2500 | |
| | | | | | | 15-24-2004 | MS-70156-2400 | FEED TO | 15-24-2038 | MS-70156-2600 | |
| H | 15-24-2001 | A-70156-2001 | 101 | BLUE | 20 AWG STRANDED | 15-24-2005 | MS-70156-2301 | FEED THRU | 15-24-2039 | MS-70156-2501 | H |
| | | | | | | 15-24-2006 | MS-70156-2401 | FEED TO | 15-24-2044 | MS-70156-2601 | |
| | 15-24-2002 | A-70156-2002 | 101 | BLACK | 22 AWG SOLID, FUSED STRANDED AND STRANDED | 15-24-2007 | MS-70156-2302 | FEED THRU | 15-24-2045 | MS-70156-2502 | |
| | | | | | | 15-24-2008 | MS-70156-2402 | FEED TO | 15-24-2046 | MS-70156-2602 | |
| G | 15-24-3053 | A-70156-5003 | 101 | YELLOW | 16 AWG STRANDED, UL STYLE #1007 ONLY | 15-24-3030 | MS-70156-5303 | FEED THRU | 15-24-3009 | MS-70156-5503 | G |
| | | | | | | 15-24-3031 | MS-70156-5403 | FEED TO | 15-24-3013 | MS-70156-5603 | |
| | 15-24-3050 | A-70156-5000 | 101 | RED | 18 AWG STRANDED 20 AWG SOLID & FUSED STRANDED | 15-24-3032 | MS-70156-5300 | FEED THRU | 15-24-3014 | MS-70156-5500 | |
| | | | | | | 15-24-3033 | MS-70156-5400 | FEED TO | 15-24-3015 | MS-70156-5600 | |
| F | 15-24-3051 | A-70156-5001 | 101 | BLUE | 20 AWG STRANDED | 15-24-3034 | MS-70156-5301 | FEED THRU | 15-24-3016 | MS-70156-5501 | F |
| | | | | | | 15-24-3035 | MS-70156-5401 | FEED TO | 15-24-3017 | MS-70156-5601 | |
| | 15-24-3052 | A-70156-5002 | 101 | BLACK | 22 AWG SOLID, FUSED STRANDED AND STRANDED | 15-24-3036 | MS-70156-5302 | FEED THRU | 15-24-3018 | MS-70156-5502 | |
| | | | | | | 15-24-3037 | MS-70156-5402 | FEED TO | 15-24-3019 | MS-70156-5602 | |
| E | NOT TOOLED | AX-70156-9003 | 554 | YELLOW | 16 AWG STRANDED, UL STYLE #1007 ONLY | NOT TOOLED | MSX-70156-9303 | FEED THRU | NOT TOOLED | MSX-70156-9503 | E |
| | | | | | | NOT TOOLED | MSX-70156-9403 | FEED TO | NOT TOOLED | MSX-70156-9603 | |
| | 15-24-2021 | A-70156-9000 | 554 | RED | 18 AWG STRANDED | NOT TOOLED | MS-70156-9300 | FEED THRU | NOT TOOLED | MS-70156-9500 | |
| | | | | | | NOT TOOLED | MS-70156-9400 | FEED TO | NOT TOOLED | MS-70156-9600 | |
| D | NOT TOOLED | AX-70156-9001 | 554 | BLUE | 20 AWG SOLID, FUSED STRANDED AND STRANDED | NOT TOOLED | MSX-70156-9301 | FEED THRU | NOT TOOLED | MSX-70156-9501 | D |
| | | | | | | NOT TOOLED | MSX-70156-9401 | FEED TO | NOT TOOLED | MSX-70156-9601 | |
| | NOT TOOLED | AX-70156-9002 | 554 | BLACK | 22 AWG SOLID, FUSED STRANDED AND STRANDED | NOT TOOLED | MSX-70156-9303 | FEED THRU | NOT TOOLED | MSX-70156-9503 | |
| | | | | | | NOT TOOLED | MSX-70156-9403 | FEED TO | NOT TOOLED | MSX-70156-9603 | |
| C | 15-24-3003 | A-70156-3000 | 101 | NONE | 18 AWG STRANDED 20 AWG SOLID & FUSED STRANDED | 15-24-3004 | MS-70156-3300 | FEED THRU | 15-24-3006 | MS-70156-3500 | C |
| | | | | | | 15-24-3005 | MS-70156-3400 | FEED TO | 15-24-3007 | MS-70156-3600 | |
| B | | | | | | | | | | | B |
| | | | | | | | | | | | |
| A | | | | | | | | | | | A |
| | | | | | | | | | | | |

PLATING CODES:
 101 - .000100/(.00254) MIN. TIN OVER
 .000050/(.00127) MIN. COPPER
 554 - .000015/(.000038) MIN. GOLD IN
 CONTACT AREA OVER .000050/(.00127)
 MIN. NICKEL OVERALL

| | |
|------|--------------|
| E | SEE SHEET #1 |
| D2 | SEE SHEET #1 |
| D1 | SEE SHEET #1 |
| C1 | SEE SHEET #1 |
| C | SEE SHEET #1 |
| B | SEE SHEET #1 |
| A | SEE SHEET #1 |
| LTR. | REVISIONS |

DIMENSIONS SHOWN (METRIC) INCH
 UNLESS OTHERWISE SPECIFIED
 TOLERANCES ANGULAR ± 1/2°
 INCH METRIC
 3 PLACE ± --- ---
 2 PLACE ± --- ± ---
 1 PLACE --- ± ---
 DRAFT WHERE APPLICABLE MUST
 REMAIN WITHIN DIMENSIONS
 DRAWN BY: SCHMIDCALL
 APP'D BY: BIXLER
 DWG. NO. BIXLER
 SCALE N: A

▽ = 0 ▼ = 0 REVISIONS ONLY ON CAD SYSTEM

TITLE SALES ASSEMBLY
 4 CKT. POWER CONNECTOR

MOLEX INCORPORATED SHEET NO. 2 DATE 04/13/92
 LISLE, ILL. 60532 U.S.A.

SEE CHART SD A-70156-****

FILE NAME: STD15602 DCH THIS DRAWING CONTAINS INFORMATION THAT IS PROPRIETARY TO MOLEX INC. AND SHOULD NOT BE USED WITHOUT WRITTEN PERMISSION. DIV. SITE CD C